

FINN CHURCH AID – OUR WORK, OUR RESULTS



FCA

Finn Church Aid

2024

MISSION

ACTION for human dignity.

VALUES

UNCONDITIONAL LOVE FOR OUR NEIGHBOURS:

We promote human rights for all and regard all human beings as equals. We trust our partners and learn together with them. We embrace diversity and create connections between people with differing views.

UNYIELDING HOPE: We are committed to working collaboratively and consistently in order to achieve our long-term goals. We celebrate our achievements and are not disheartened by setbacks.

COURAGE: We work courageously for change. We dare to question established practices and call for the reassessment of power structures where needed.

RESPECT: We respect each other and our different beliefs. We respect the communities we work with, extending this to the environment and all its inhabitants. We value the resources given to us and use them in a cost-effective and transparent manner. We strive for mutual learning with our partners.

VISION

FINN CHURCH AID (FCA)'S vision is a world comprised of resilient and just societies where everyone's right to peace, quality education and sustainable livelihood has been fulfilled.

IDENTITY

FCA IS A RIGHTS-BASED actor, and our action is guided by international human rights standards and principles.

FCA IS A FAITH-BASED and church-related organisation founded by the Evangelical Lutheran Church of Finland. The Church has mandated FCA to carry out its international diaconal work to help those most in need globally. The Christian tradition of compassion and social justice guides us. We value the different backgrounds and beliefs of all people we work with and promote interfaith collaboration.

FCA IS A MEMBER OF ACT ALLIANCE and is committed to working with its ecumenical and faith-based partners.

FINN CHURCH AID is Finland's largest international aid organisation with more than 75 years of experience. We specialise in the world's most fragile contexts and work with the most vulnerable people, regardless of their religious beliefs, ethnic background or political convictions.

COVER PHOTO: Nyaluit Tang Chuol crosses a swamp carrying her books in New Fangak, South Sudan. Finn Church Aid supports education in the area. PHOTO: ANTTI YRJÖNEN

Publisher: Finn Church Aid
Editor in Chief: Erik Nyström
Layout: Nici Lönnberg
Graphic design: Johanna Hörkkö

Photo Editors: Antti Yrjönen, Björn Udd
Printing house: Grano Oy
Helsinki, June 2025

ON A PATH TO COLLISION OR UNITY? WE MUST ACT NOW.

LAST AUTUMN, I was driving home from my summer cottage. My car had good summer tyres and the road seemed dry. As evening fell, I approached a familiar intersection. I started to slow down in good time. The tyres had no grip. I pressed the brakes harder, but nothing happened; the car didn't slow down. My pulse raced, every muscle tensed, and rational thoughts vanished. The black ice took me completely by surprise. Finally, I managed to control the car and steer it onto the side of the road. I got away with only a scare.

It is fair to say that the whole world was on a slippery slope in 2024. The rules-based world order we were familiar with crumbled, and a feeling of insecurity took hold. Rules that we had taken for granted were stretched and broken, for example in the wars in Gaza and Ukraine, and in many other crisis areas. The international community appeared toothless and incapable of intervening in situations where people lost their lives or were forced to continue living in dire conditions and uncertainty. Now we ask ourselves: can we change our course before it's too late?

We cannot always influence major political forces or upheavals. But we can still do something. We can contact decision-makers, write opinion pieces, raise issues, or donate money to those who are doing concrete work for the common good. We can stop this downward spiral.

I believe that values and commonly agreed rules protect particularly the most vulnerable—those whom life has mistreated. The cause may be a natural disaster, climate change or human conflict. In any case, they need our help. We can do our part.

Last year, we were able to deliver 75.3 million euros in aid, and our work directly reached an impressive 840,000 people in the most fragile circumstances. We are grateful for your support. You have helped children transition to safe school environments; young people find their first jobs or start businesses; and signed agreements that have helped end hostilities. Every euro and every action has helped to halt the global slide towards selfishness and a world where the rules that protect us all are not followed.

“In 2024, our work reached almost 840,000 of the most vulnerable people.”

An extreme example of this development was the sudden and harsh decision by the United States to cut international aid at the beginning of 2025. The decision terminated nearly 10,000 funding agreements worth a staggering \$58 billion and permanently changed the possibilities for delivering international assistance to people in need. Approximately 7 million euros was cut from Finn Church Aid's projects overnight. The decision will affect at least 200,000 children.

If this trend continues, we will no longer talk about veering from the path of values and rules, but rather a complete collision – a collision whose consequences are unpredictable. We must not let this happen. We must not give up.

Tomi Järvinen
Executive Director, FCA



PHOTO: BJÖRN UDD

RIGHT TO EDUCATION

ONE OF OUR KEY OBJECTIVES IS to maximise the opportunities of children and youth to attend school and receive a quality education. Our work covers early childhood education and care, primary and secondary school, technical and vocational education and training (TVET) and education sector development.

Our educational work focuses on refugees and vulnerable children and youth, particularly on gender equality and inclusion of people with disabilities. We also build and repair school facilities. Schools provide a safe environment to grow and learn for children living amidst disasters, societal pressures and harsh economic realities that lie at the core of issues like child marriage and child labour.

We ensure quality education by building teachers' professional skills and competence with the help of local professionals and volunteers from our Teachers Without Borders network. Teachers' ability to provide psychosocial support is crucial in times of crisis. Through schools,

we offer activities that support mental health and psychological and social wellbeing for students and teachers.

We also develop digital solutions and resources for learning and teaching. In Ukraine, online learning has been the only way for most students to continue studying. In Kenya, we arrange teacher training remotely from Finland.

Education is crucial as it provides young people with easier access to sustainable livelihoods while promoting stability in communities. Career counselling offers tools for encouraging children and youth to stay in school and helps them find their own career path. Technical vocational education and training (TVET) offers opportunities for internships and thereby facilitates access to employment. Quality learning materials and trained teachers can make a real difference in young people's lives and help them become responsible and caring adults. Peace education is another effective tool in building stability.

Our results in 2024



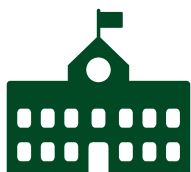
579 814

students at different levels have access to quality education. 48.8 per cent of the students are girls.



10 522

teachers participated in training sessions, 59 per cent of them female.



840

school-related structures constructed and rehabilitated.



19 783

persons with disabilities supported.

In collaboration with: **Teachers without Borders** | **Omnia Education Partnerships (OEP)**



Alina Symonenko is one of the school psychologists trained by FCA in Kharkiv, Ukraine. In schools, psychosocial support is often provided through play.

PHOTO: ANTTI YRJÖNEN

RIGHT TO LIVELIHOOD

EVERYONE HAS A RIGHT TO a livelihood that enables them to support themselves and their families, to increase their wellbeing and to participate in developing their communities as equal citizens.

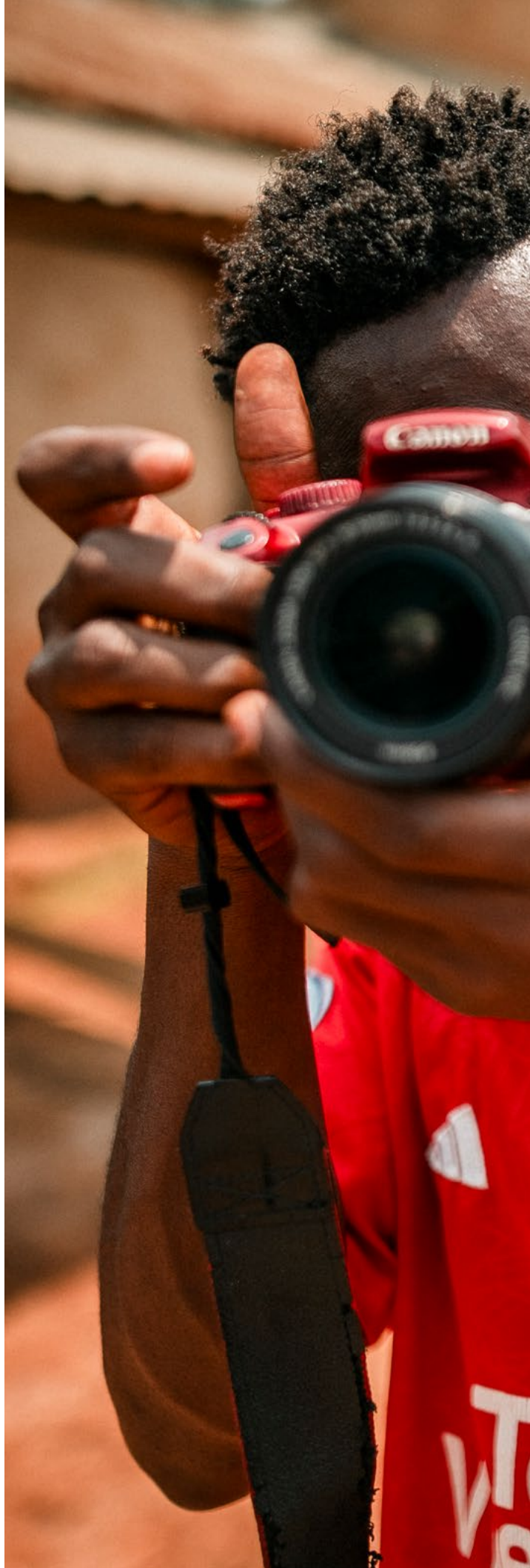
Our business and vocational education and training programmes link learning to earning by training and mentoring women, young people and refugees for gainful employment or establishing businesses. In 2024, over 80 per cent of graduates from our technical vocational education training (TVET) programmes were earning a living within three months after graduation. Besides traditional sectors such as agriculture, trade, and construction, jobs are now available in creative industries such as coding, online services, music, and gaming.

Small and medium-sized enterprises (SMEs) play a key role in job creation in developing countries, which is why Finn Church Aid supports the private sector and promotes self-employment in all its programme countries.

FCA Investments, an investment company set up by Finn Church Aid, makes capital and business management skills available for economically, socially and environmentally sustainable SMEs that employ young people and women. These businesses reduce poverty by creating jobs and income opportunities and by building resilient and productive communities. We provide business development services for SMEs before and after financing them to develop key management practices that reduce investment risks and funding costs.

Community-based cooperatives and savings groups are also at the heart of our livelihood work. Amongst other support functions, they provide business loans and administrative assistance. Last year, Women's Bank launched new projects, and 6,000 women joined our work for the first time. Women's savings and loan groups and cooperative banks grew their capital by almost 600,000 euros through their own savings. Already 83 per cent of the women we support have a better and more sustainable livelihood. In total, Women's Bank's work reached 44,000 women and their family members.

In collaboration with: **Women's Bank** | **FCA Investments** | **FCA Creative Industries**





Our results in 2024



18 757

people had access to business development services.



5 716

youth benefited from Linking Learning to Earning services aiming towards employment.



2 377

full-time jobs created and supported.

Sadiki Sumili, a refugee from the Democratic Republic of Congo, runs a photography business in Rwamwanja, Uganda. Sumili learned the profession in vocational training organised by FCA.

PHOTO: ANTTI YRJÖNEN

RIGHT TO PEACE

PEACE IS A PREREQUISITE for achieving human rights and sustainable development. When peace prevails, children can go to school, and adults can focus on building secure livelihoods and stable societies.

Finn Church Aid builds peace in some of the world's most fragile countries, such as South Sudan, the Central African Republic and Somalia, and countries suffering from protracted conflicts. In addition to war and conflicts, stability is threatened by a shrinking space for civil society; growing hate speech; and climate change, which contributes to competition for scarce natural resources and forced migration.

Needs are growing, but at the same time international resources and attention are moving away from conflict prevention, conflict resolution and peacebuilding. This shift of global attention shrinks the space for peace. Peacebuilding needs to adapt and provide support to local peacemakers, including digital solutions such as social media and radio, to support the active role of civil society and by linking peace to education and livelihoods.

Peace means more than the absence of conflict; we can achieve sustainable peace only if the entire community agrees to implement structural changes that support peaceful coexistence between different groups. Civil society actors in conflict-ridden countries are instrumental in creating inclusive and equitable peace, but they need long-term support.

Peace can be achieved and sustained if it is inclusive. Women, youth and religious and traditional actors are all affected by conflict and therefore also hold the solution to it. Peacebuilding processes often exclude them, which is why we want to make sure their voices are heard.

In collaboration with:

The Network for Religious & Traditional Peacemakers



Habiibo Iidow Kerow builds a temporary shelter at a camp for internally displaced people in Baidoa, Somalia.
PHOTO: ANTTI YRJÖNEN



Our results in 2024



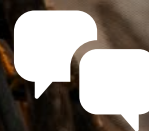
31 600

officials and local leaders were trained to strengthen local institutions and develop policies that are more inclusive and responsive to community needs.



1 174

civil society organisations and groups in ten countries benefited from training, technical, thematic and financial support to promote positive social change, especially led by women and youth.



13 696

civil society members were trained in dialogue building and civil society engagement, enabling them to work more effectively for peace and amplify their communities' voices.

FCA WORKS IN CHALLENGING CONDITIONS

Our long-term operations continued in Africa, the Middle East and Asia in 2024. In Europe, our work in Ukraine continued.

Africa

1 Uganda

With 1.4 million refugees, most of them from South Sudan and the Democratic Republic of Congo, Uganda is Africa's largest refugee-hosting country. Finn Church Aid runs educational and entrepreneurship programmes for both refugees and Ugandans.



"We received help with language exams, training on job interviews, and career guidance. Now I am ready to go to Canada."

Nurse **Kemigisha Kellen** found a job in Canada through the Complementary Pathways programme that connects refugees to employment in third countries. PHOTO: ANTTI YRJÖNEN

2 South Sudan

Ever since its independence, South Sudan has been afflicted with outbursts of local violence, which have intermittently escalated into civil war. Conflicts, combined with floods and droughts caused by climate change, are complicating daily life and access to food. In South Sudan, we focus on peacebuilding, livelihood opportunities for youth and women, as well as skills training and education.

3 Somalia

Somalia faces several complex and interconnected crises. Severe drought caused by climate change is displacing people, and the humanitarian crisis is exacerbated by political instability and conflict. In Somalia, we focus on peacebuilding that supports national reconciliation and inclusive local governance, while also promoting education and income opportunities.

"I dream of becoming a doctor. I want to support those who are ill and prescribe them medicine. Many are constantly sick at the refugee camp."



Ijabo Ibrahim Hassan, 16, lives at a refugee camp in Baidoa, Somalia. Ijabo moved from a poor rural area to Baidoa to enrol in school. FCA's schools are free for the camp's residents. PHOTO: ANTTI YRJÖNEN

4 Kenya

In Kenya's poorest regions, drought brought on by climate change is causing shortages of basic supplies, while disputes over the use of scarce natural resources spark regional conflicts. In Kenya, we support mainly refugees through peace, education and livelihoods. In the capital Nairobi, we help youth from challenging conditions to gain the skills needed in creative sectors such as the music and gaming industries.



"More students drop out now. They are hungry and cannot focus in class. When there is food at school, more students show up."

Teacher and refugee **Esther Amal Sebit** explains the consequences of the United States' funding cuts to schools in Kenya. PHOTO: BJÖRN UDD



Finn Church Aid used 91 per cent, a total of EUR 68.4 million, of its operating expenses in 2024 for international aid operations.

5 Central African Republic

The Central African Republic is recovering from civil war and still suffers from conflicts between armed groups. Our emphasis is on peace education for youth to eradicate hate speech and rumours, livelihood opportunities for women and youth. We also work with protection, first-response support and counselling for survivors of gender-based violence.



6 Ethiopia

Ethiopia suffers from high inflation and youth unemployment. We established a country office in Ethiopia in 2024. Our work focuses on education and livelihoods. Our Creators Hub training centre in Addis Ababa aims to help young people find employment in digital and creative fields.



“After the course, I’m hoping to start my own digital marketing company. I could work both in Ethiopia and for foreign companies. I see many opportunities.”

Eyerusalem Baye attended the newly opened Creators Hub training in digital marketing in Addis Ababa, Ethiopia. PHOTO: BJÖRN UDD

Europe

7 Ukraine

Russia’s war of aggression has damaged thousands of schools in Ukraine, with hundreds of them in disrepair. Functioning bomb shelters are a prerequisite for organising in-person teaching. Our work in Ukraine focuses on rebuilding schools, providing psychosocial support to teachers and pupils, and supporting the development of the education sector.

Middle East

8 Syria

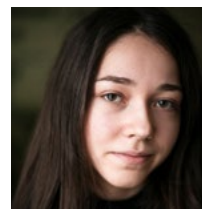
The atmosphere in Syria following a power shift in December 2024 is a mixture of hope, high expectations and uncertainty. Humanitarian needs remain enormous. Our work focuses on improving education, repairing schools, providing psychosocial support and strengthening social cohesion.

9 Jordan

Jordan hosts the second-highest number of refugees per capita globally. In Jordan, we support livelihoods by teaching business skills and with vocational education training.

10 Israel and the Palestinian territories

The war that started in October 2023 has caused a massive humanitarian disaster in Gaza, with widespread impact in the region. Our work with partners in Gaza, the West Bank and East Jerusalem focuses on education and psychosocial support.



“There are so many people who need rehabilitation due to the war. I want to help them return to a peaceful life.”

Masha, 16, dreams of becoming a psychologist and studies at a lyceum in Kharkiv, close to the frontline. The region is frequently under bombardment and attack. Shelters constructed by FCA enable on-site learning, and they are constantly in use.

PHOTO: ANTTI YRJÖNEN

Asia

11 Myanmar

Since the military coup in Myanmar, we have focused on education work. Cash transfers to beneficiaries have also become an essential part of both our programme work and direct humanitarian assistance.

12 Nepal

In climate change-affected Nepal, 60 per cent of the population relies on agriculture for their livelihood. Our work focuses on providing women and other vulnerable people with income opportunities and access to education, aiming to promote the country’s long-term development.



“When there’s no rain or harvest, people go elsewhere for work. Drought prevents us from living together as a family.”

Sabitri Gurung Ale’s husband works in Malaysia. Gurung Ale is one of the farmers who were trained in farming methods that help adapt to climate change. The project was funded by the Finnish and German Ministries for Foreign Affairs and the European Union.

PHOTO: ANTTI YRJÖNEN

More detailed financial information can be found on [page 18](#).

RELIEF TO DISASTER-AFFECTED PEOPLE

HUMANITARIAN ASSISTANCE alleviates suffering in emergencies caused by natural disasters and wars.

We support people in affected areas with sufficient nutrition, clean water, health care, accommodation and sanitation. Being able to return to school as quickly as possible gives children and young people a sense of security, while in protracted crises it is important to provide families with opportunities to earn a living.

In addition to delivering emergency assistance, we run country programmes, which offer long-term humanitarian assistance. Many of our programmes focus on supporting displaced people in their home countries or neighbouring states. We aim to combine humanitarian assistance with long-term development cooperation and peacebuilding – known as the triple-nexus approach.

According to international humanitarian principles, everyone is entitled to assistance regardless of their ethnic background, religion or nationality. After international assessment, Finn Church Aid was certified against the Core Humanitarian Standard (CHS).

Our results in 2024



87 837

people supported with access to basic services through our disaster responses.



38 683

people were trained in disaster risk reduction, climate change adaptation and environmental protection.

Displaced Palestinians leaving eastern Khan Younis in the southern Gaza Strip after the Israeli army ordered people to immediately evacuate certain parts of the city in May 2025.

PHOTO: DPA / LEHTIKUVA / ABED RAHIM KHATIB





Together with local organisations, FCA has supported the education and mental well-being of children and young people in Gaza's dire humanitarian crisis. PHOTO: PYALARA

Words may fail us, but we cannot lose hope

THE NEWS FROM GAZA has long been heartbreaking: hunger; catastrophic food shortages; and thousands of trucks filled with vital aid that Israel does not allow into Gaza. Tens of thousands dead; hostages still not released; forced displacement of the population; homes destroyed; war crimes and gross violations of humanitarian law are added daily to this obscene list.

Children in Gaza have not attended a proper school for over a year and a half. Over 80 per cent of school buildings have been partially or completely destroyed in bombings. One million children are traumatised.

As a mother of school-age children myself, the suffering of these children touches me deeply. I think of mothers in Gaza, whose children are scared and hungry. What words can they use to comfort their children? How would I protect my own children in the same situation?

Amid my hopeless thoughts, my phone signals that I have new messages. I see pictures of laughing children playing. In other pictures, children are sitting, focusing on their homework. 'Our tent school is open again, and classes are continuing after a couple of days' break. We're not giving up!' The messages are from FCA's partner organisation, which is organising teaching in the midst of the crisis.

Gaza is the most dangerous place in the world to go to school. Teachers and students at the schools we support have also been killed in the bombings, but the teachers are not giving up. In makeshift classrooms, children receive support for their trauma, snacks, water and, most importantly, an opportunity to socialise with other children. Play and education help them forget, at least for a while, the horror that prevails outside the tent walls.

School creates hope. The children and parents in Gaza are not giving up, so we must also do everything we can.

Sabina Bergholm
Country Director, IOPT



PHOTO ANTTI YRJONEN

CHANGE REQUIRES RELENTLESS ADVOCACY AND SUSTAINABLE PARTNERSHIPS

INTERNATIONAL POLITICS are in turmoil as the world becomes more polarised. Former developing countries are wielding power in unprecedented ways, requiring a reassessment of our values. Adapting to these changes requires tireless advocacy and open-minded partnerships.

At a time when Finland and several other countries have decided to make severe cuts in development cooperation; conflicts, economic challenges, and the consequences of the climate crisis are increasing in Europe's neighbouring regions. We work to amplify the voices of the most vulnerable people to audiences in Finland, internationally, and our programme countries. Through that, we seek changes in policies, attitudes, and laws.

In 2024, we spoke out especially in favour of education so that children and youth can go to school even during crises. A delegation led by South Sudan's Minister of Education visited Finland as guests of Finn Church Aid (FCA) to learn more about Finland's education system and to discuss the situation in South Sudan. We have succeeded in influencing Finnish development policy so that education continues to be emphasised. For our African partners, we have particularly highlighted vocational training for refugees.

FCA always collaborates with local authorities whenever possible. This ensures that our expertise is sought after in important mechanisms at both regional and national level. As a result, we often become involved in significant processes that have a broad impact on the countries where we operate.

In the future, we aim to develop our partnerships within the private sector and enhance the outcomes of our collaboration with companies. Strategically planned partnership work secures a diversified funding base, which is essential in times of funding cuts. Alongside our long-standing partnerships, we have focused on strengthening cooperation with actors in Canada and the Gulf States.

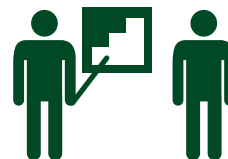
Supporting and strengthening local actors through funding is a crucial strategic choice for us, which prompts us to consider the added value we bring to our local partners. We would not be able to work in our programme countries without the involvement of local civil society and organisations that help us to implement projects.

In addition to our advocacy, partnership and programme work, we participate in research cooperation. Research data enables us to tell others how our work enhances the resilience of societies and people and promotes global justice and the realisation of human rights.

Our results in 2024



We successfully influenced Finland to maintain education as a priority in its development policy.



Together with our partners, we drafted recommendations for updating the African Union's vocational education strategy, focusing particularly on the integration of refugees and the inclusion of persons with disabilities.



We consciously raised awareness of partnership opportunities with Canada and Persian Gulf States and signed new cooperation agreements in these regions.

In collaboration with: **Changemaker**



Mathematics teacher Huda Ismail Abakar fled the conflict in Sudan when she was pregnant. Now she studies English in an FCA project in order to continue teaching in her new home country South Sudan.

PHOTO: ANTTI YRJÖNEN

PARTNERING WITH PARISHES FOR A MORE JUST WORLD

FINN CHURCH AID (FCA) is one of the treaty organisations of The Evangelical Lutheran Church of Finland, mandated to carry out the international diaconal work of parishes. The Church and its parishes form one of FCA's key stakeholder groups.



During the year, we met with church employees and parishioners at a total of 81 different events.



FCA has 543 contact persons in parishes. The contact persons provide up-to-date information and material about FCA's work.

"Being a contact person is a matter close to my heart. I feel like I am part of a larger community working together for a more just world."

Niina Hautala,
youth worker,
Kajaani Parish



THE ALONG THE PATH OF OPPORTUNITIES MATERIAL, produced to support parishes, contains ideas on how to raise global issues with children.



THE DISASTER AND THURSDAYS IN BLACK EXHIBITIONS were shown in a total of 13 parishes.

PHOTO: KUA



ARCHBISHOP Tapio Luoma familiarised himself with FCA's work in Uganda, South Sudan and Ethiopia. Among other things, he learned about the development of the education sector and the role of religious actors in peace work. PHOTO: BJÖRN UDD

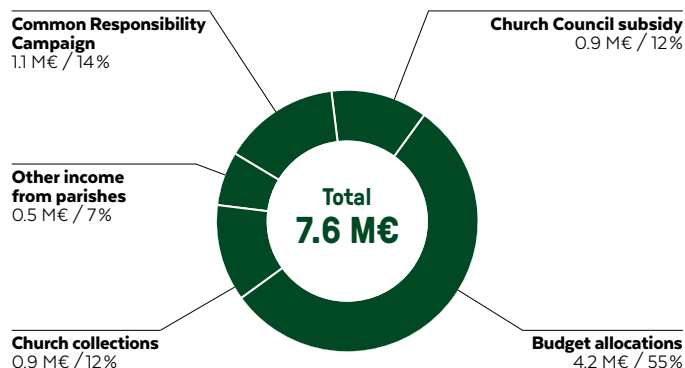
FCA'S WORKING GROUP FOR PARISH PRIESTS visited our project promoting livelihood opportunities in rural western Nepal.

PHOTO: EMMA SALMINEN



FUNDS ALLOCATED BY PARISHES are one of the most important sources of support for FCA. In 2022, budget allocations to FCA from parishes amounted to some 4.2 million euros, church collections to about 0.9 million euros, and the Common Responsibility Campaign resulted in about 1.1 million euros to FCA.

Church and parish support in 2024





Arto and Barbara Leppilahti were impressed by FCA's work in Kenya. "It was difficult to see the poverty, but when we came back, I felt a lot of hope. I didn't expect that. The hope came from Finn Church Aid's projects in the area," Barbara says. PHOTO: BJÖRN UDD

MAJOR DONORS BUILD HOPE

MAJOR DONORS INCLUDE individuals, families, foundations or companies. Their sizeable donations help us offer support to the most vulnerable children and families. Major donors understand the multifaceted nature of our work, and many share our concerns about the global impact of multiple disasters occurring simultaneously.

In 2024, the acute humanitarian disaster caused by the war in Gaza, as well as the war in Ukraine, touched our major donors deeply. Their support has enabled education, psychosocial support and basic needs for children and families amid crises.

Thanks to the Pirkko and Tarmo Vahvelainen Foundation, for example, Ukrainian schoolchildren were able to attend a summer camp in the Kharkiv region. The camp responded to the lack of schooling caused by the war and offered psychosocial support to youth living in the midst of war. The safe camp offered not only education but also hope and a sense of community in a difficult situation.

Major donors have expressed their willingness to direct support where it is most needed. In 2024, they also supported the promotion of education and livelihood opportunities in Uganda, Kenya and Nepal.

In January 2024, a group of major donors familiarised themselves with FCA's education and peace programmes in Kenya. They visited the Kakuma refugee camp, where around 300,000 people live in harsh conditions.

A growing number of major donors donate stock. As a non-profit organisation, FCA is exempt from paying gift tax on stocks or book-entry securities, and the donor is also exempt from paying tax on any potential value increase. Donors can direct their donations to a specific project or programme area, in line with their preference.



Youth from the Kharkiv region participating in art activities at the summer camps supported by Pirkko and Tarmo Vahvelainen Foundation in June. PHOTO: VERONIKA KOROBKO

It is important for us to have a trusted and confidential relationship with our donors. We regularly report on the progress of our work and the impact of the donations. Our donors express their high appreciation for the fact that they can trust us and our work, and that donating is a very easy process. That is why we seek the best possible way for each major donor to participate in our aid work in a way that reflects their personal values and wishes.

GROWTH, DESPITE CHALLENGES IN FCA FINANCES

IN 2024, Finn Church Aid’s overall revenue continued to grow, increasing by 2% compared to the previous year. Particularly our collaboration with international institutional donors was strengthened.

The Finn Church Aid group reported a negative financial result of 800,000 euros. This outcome reflects a rapid shift in the nature of donations, which are increasingly earmarked for specific crises and do

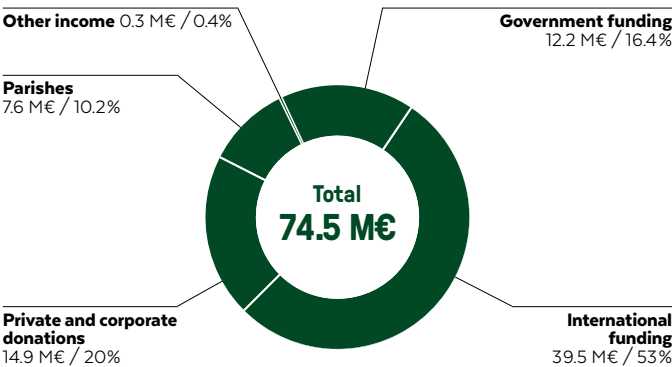
not always align with the geographic footprint of our operations.

In 2024, we continued to operate under significant cost pressure, driven by external factors such as inflation in some of the world’s most fragile contexts. Despite the challenging environment, our administrative expenses remained low throughout the year.

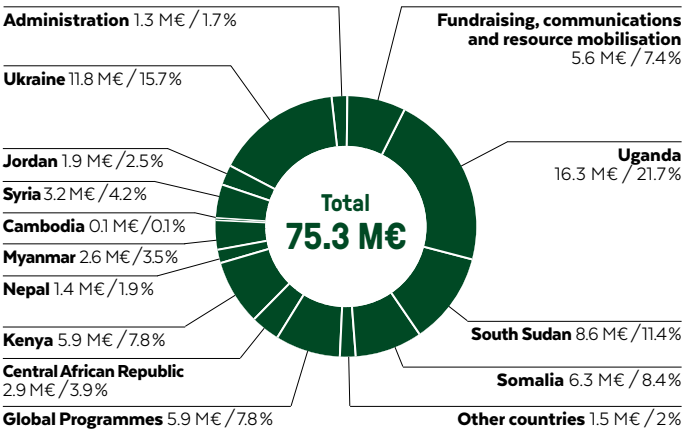


READ MORE about FCA’s financial information by scanning the QR code or go to the address: kirkonulkomaanapu.fi/en/us/finances

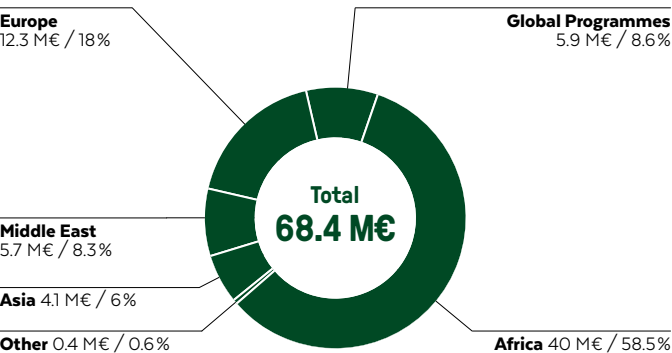
2024 Income



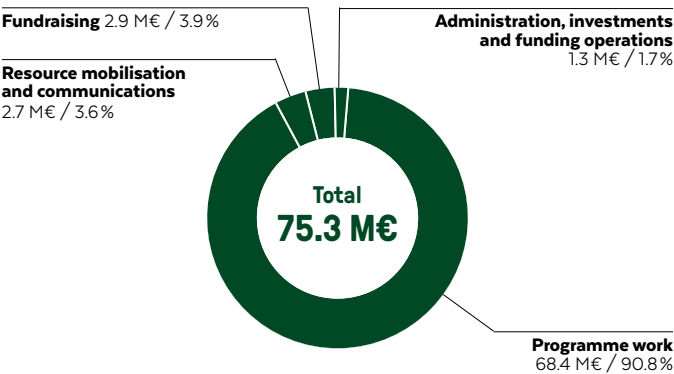
2024 Expenditure



2024 Programme areas



2024 Programme work and support functions



*Figures rounded up

OUR PARTNERS



With support from
Finland's development
cooperation

Ministry of Education
and Culture



Funded by the
European Union



Funded by
European Union
Humanitarian Aid



a fund for education
in emergencies



UNHCR
The UN Refugee Agency



Empowered lives.
Resilient nations.



german
cooperation
DEUTSCHE ZUSAMMENARBEIT



Government of the Netherlands



AFD
AGENCE FRANÇAISE
DE DÉVELOPPEMENT



SOMALIA
STABILITY
FUND



WUSC EUMC



GPE



Kepler



unicef



UN
WOMEN



PWRDF
The Primate's World Relief
and Development Fund
The Anglican Church of Canada



Gift of the United States
Government



THE REPUBLIC OF UGANDA



UNITED NATIONS
MULTI-PARTNER
TRUST FUND



Sida



CANADA-UKRAINE FOUNDATION
FONDATION CANADA-UKRAINE
КАНАДСЬКО-УКРАЇНСЬКА ФУНДАЦІЯ



KAICIID
DIALOGUE
CENTRE



unesco



CBPF Country-based
Pooled Funds



UNITED NATIONS
MULTI-PARTNER
TRUST FUND
Reconciliation Stabilization Resilience



Canadian
Foodgrains
Bank
A Christian Response
to Hunger

Maya Ale Magar fetches
water for her family's
daily needs from a river
in Taranga village, Nepal.
PHOTO: ANTTI YRJÖNEN





Finn Church Aid

Eteläranta 8, FI-00130 Helsinki, Finland

Tel. +358 20 787 1201

fca.communications@kua.fi

finnchurchaid.fi



The Core Humanitarian Standard (CHS) describes the essential elements of principled, accountable, and high-quality aid work. FCA complies with and is certified against the CHS since 2017.